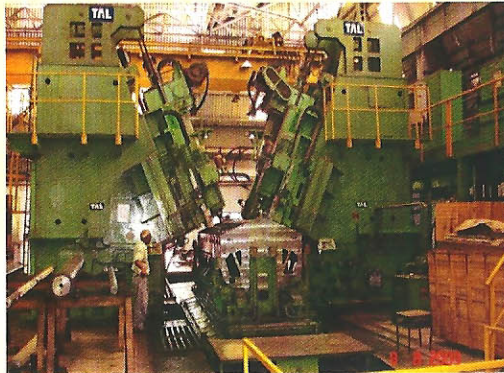




# COFMOW News Letter

## ANGULAR BORING MACHINE



## CNC SPOT WELDING MACHINE



## CNC DRILLING MACHINE



### Organisation

Chief Administrative Officer  
Sh. S.K.Agrawal

### Mechanical Branch

CME : Sh R.P. Singh  
CME/P : Smt. S. Saraswathi  
CME/PCM : Sh. A.K.Gupta  
CPM : Sh. Pradeep Kumar  
CEE : Sh. Dinesh Kumar

### Store Branch

COS : Sh. Pradeep Kumar  
COS-II : Sh Raj Singh

### Finance Branch

FA & CAO : Sh. B.Pandey  
FA & CAO-II : Sh. Ajai Mathur

### COFMOW warmly welcomes

Sh. S.K. Aggarwal CAO and  
Sh. B. Pandey FA & CAO

### Au revoir :

Sh. P.K. Agrawal CAO and  
Sh. K.S. Sunila FA & CAO

### Trivia Lathe

*The oldest known use of lathes which continues even today is the potters wheel, (2500 BC till date), and the first metal/wood cutting lathe design was conceptualized by the versatile genius Leonardo da vinci, which could not be made in his time due to paucity of resources.*



### Single Window for :

- Induction of cutting edge, state of the art technology for Manufacture/ Repairs
- Setting up complete plants on composite, turn key basis for hastened deliveries, timely execution, minimising coordination efforts and pin pointed accountability at all levels
- COFMOW delivers complete technological solutions...

Central Organization for Modernization  
of Workshops (COFMOW)

Railway Offices Complex, Tilak Bridge, New Delhi-02  
Phone – 011-2337 0547, Fax – 011-2337 8159  
Website: www.cofmow.gov.in

